

DR PAUL ENOCHS M.D., BARIATRIC SURGEON, NORTH CAROLINA, USA



Robotic SADI with cholecystectomy using the LiVac® Retractor System

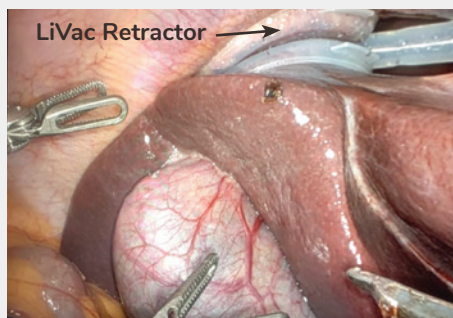


Figure 1 – Cholecystectomy: LiVac in position between right lobe of liver and diaphragm



Figure 2 – LiVac providing retraction during gall bladder removal

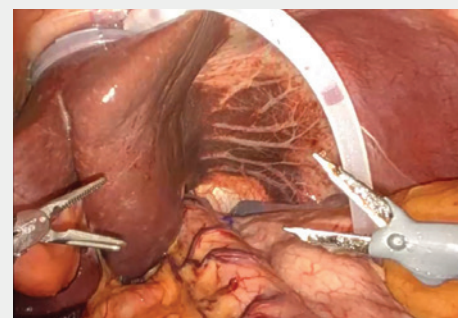


Figure 3 – SADI: LiVac repositioned to provide left lobe retraction

- In this case, the patient required both a SADI-S (Single Anastomosis Duodeno-Ileal bypass with sleeve gastrectomy) and a cholecystectomy during the same procedure.
- The LiVac Retractor retracted the **left lobe of the liver** enabling the SADI-S to be performed.
- The cholecystectomy was then performed with the LiVac Retractor System repositioned to retract the **right lobe of the liver** providing good exposure of the surgical field.

The LiVac Retractor System includes a soft and flexible silicone ring which connects to suction creating a vacuum for gentle, liver retraction.

It is positioned between the diaphragm and either the left or right lobes of the liver to gently lift the liver from above and is suitable for both laparoscopic and robotic procedures.

As a gentle, non-metal retractor, the LiVac Retractor System is inserted via an existing incision eliminating the need for a painful epigastric incision leading to less trauma, improved patient recovery and minimizing scarring.

The LiVac Retractor System:

- Was the preferred retractor for its ability to support both procedure types
- Minimized transition time between the SADI-S and cholecystectomy
- Facilitated the procedure
- Reduced overall procedure time.

For more information on the LiVac Retractor system, please contact your representative or go to livac.com

Livac USA One Life Sciences, Inc. (“KURO”),
4976 Highway 169 N, Minneapolis MN 55428 USA
Contact +1 612 467 9186 or customerservice@livac-usa.com livac.com

LiVac is a trade mark of Livac Pty Ltd

